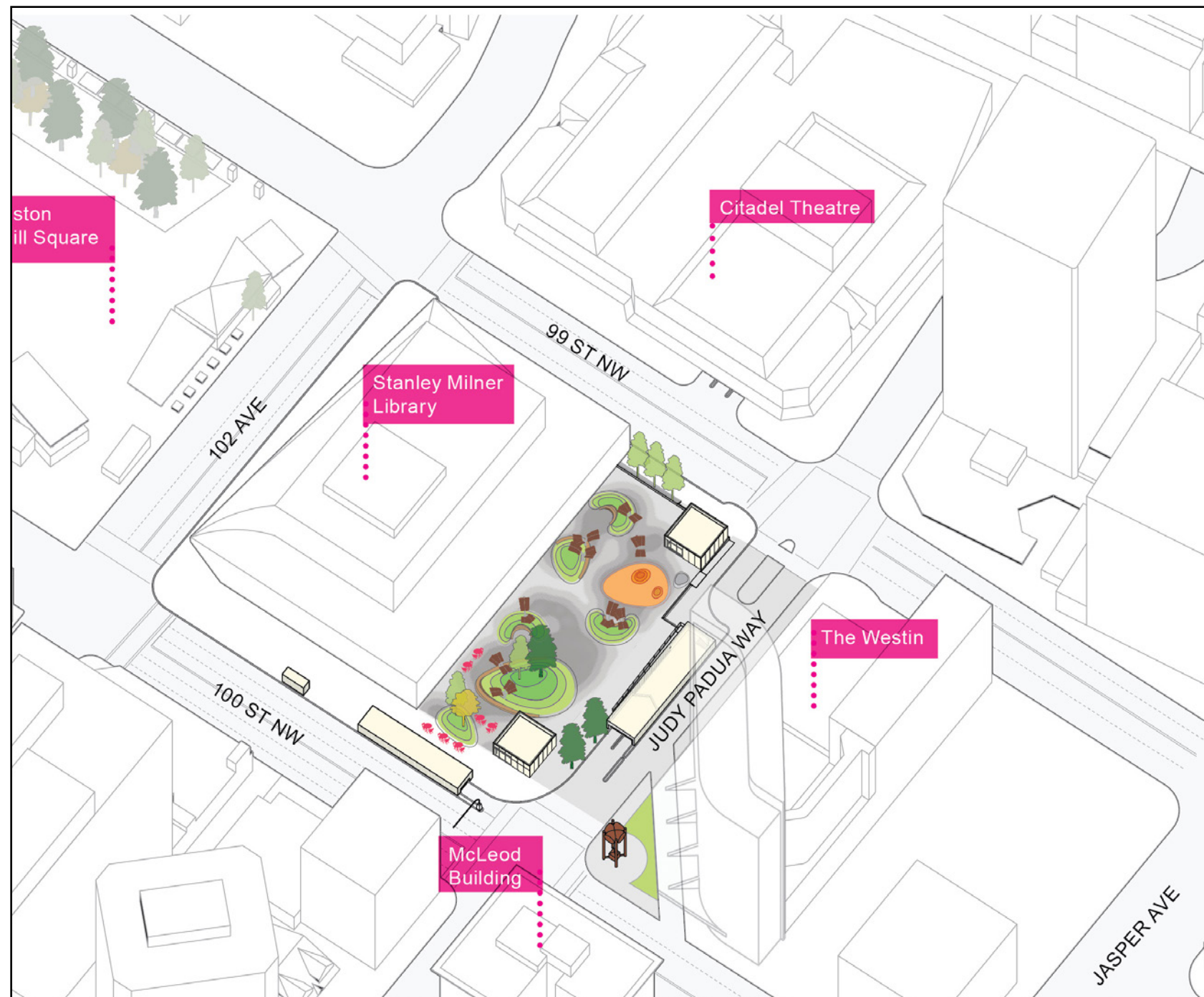


Project purpose



The Centennial Plaza Redevelopment project sets a direction for future improvements to make Centennial Plaza easier to get to, move around in and enjoy. We have updated the design since the June Public Engagement Survey. Take a look at the following information and let us know what you think!

ADVISE

Project timeline



2018

Fall 2018:
Gathered information through public engagement on child-friendly options in the Civic Precinct.

2020

Winter 2020:
The design consultant and project team reviewed the City strategies and policies and the information provided through the 2018 public engagement.

2020

Spring 2020:
Developed project goals and concept options and gathered feedback from the public and neighbouring groups.

2020

Summer – Fall 2020:
Design updated and shared with stakeholders and public to gather feedback.

2021

Winter 2021:
Final design presented to City Council to request funding to deliver.

future

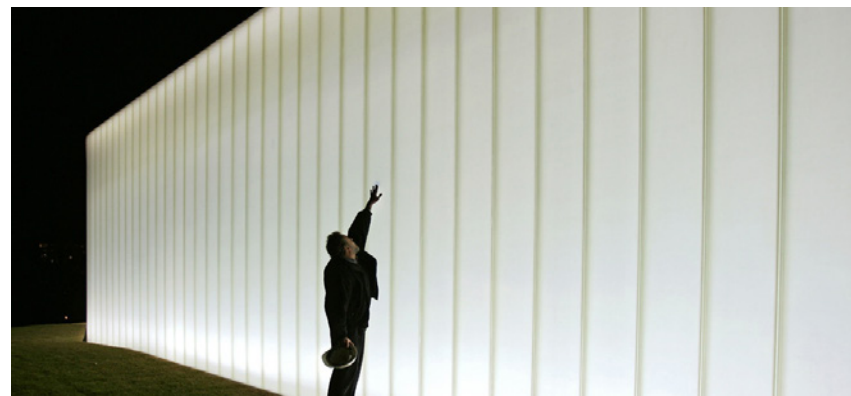
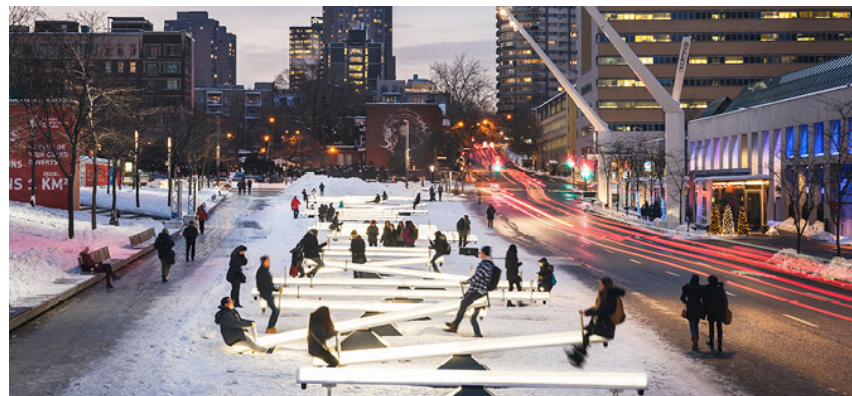
If budget is approved, the project will continue into Detailed Design and Construction.

ADVISE

SHARE YOUR VOICE
SHAPE OUR CITY



Project theme and goals



The project theme and goals are used to guide design decisions. The theme for this project is Sensory Garden. The proposed design uses our senses of sight, sound, touch and smell to create multiple experiences as people move through the Plaza.

The four project goals for the Centennial Plaza Redevelopment project are:

- + **Child-friendly space** – a space that encourages child-directed play even without formal play structures
- + **Safety & security** – a space that is safe and secure with green space, good sightlines and appropriate lighting
- + **Winter City** – a space that will be used all four seasons through seasonal planting, lighting and covered areas
- + **Everyday use** – a space that is not only for big events, but for people to gather, to sit and to walk through

ADVISE

What we did to inform design

Public input

In spring and summer 2020, we gathered input on the Centennial Plaza Redevelopment concept options from key downtown stakeholders and from the general public through an online survey that received 957 responses

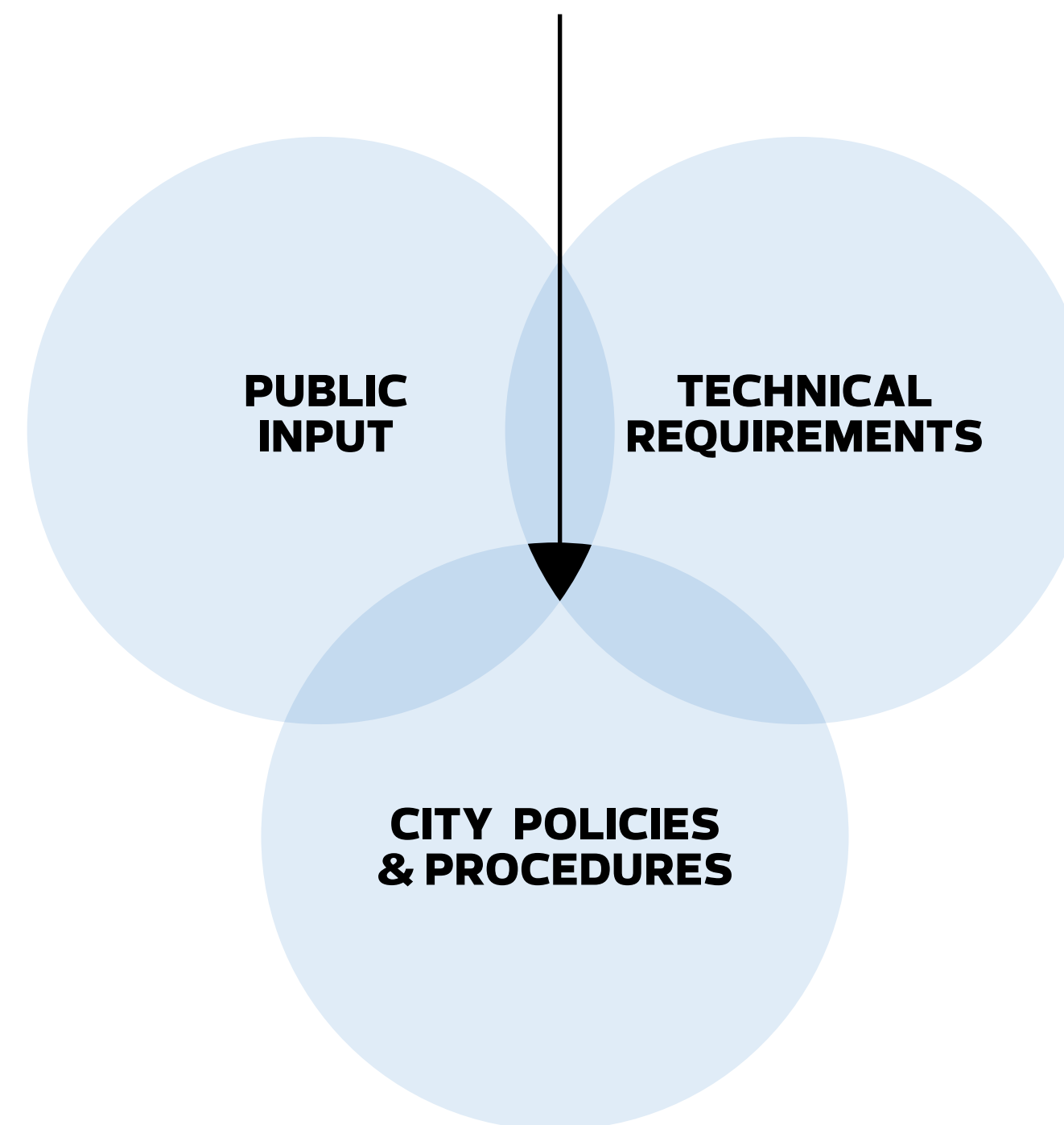
City policies and procedures

The goals of the Capital City Downtown Plan were considered when developing the design including creating a green and walkable downtown that is vibrant and accessible. The Plaza connects the area so it feels like one cohesive place and supports a pedestrian friendly environment.

Technical requirements

Multiple technical considerations are reviewed including structural load limits on the Plaza, maintenance and operation needs, building codes, land surveys, utility lines and construction material standards.

Project Decision



ADVISE

SHARE YOUR VOICE
SHAPE OUR CITY

Preliminary Design

In June, we asked the public and stakeholders to tell us what they liked about three concept options. We heard that all the options have good things about them and that they shared many attractive elements.

After reviewing public feedback, City policies and procedures and technical requirements we have developed a preliminary design for Centennial Plaza. The following slides will detail what we heard during engagement and how it influenced the design.

***I like the small hills the best out of all the designs.
I think it is a unique feature that we haven't really seen
in Edmonton, especially in the downtown core.
It makes the space feel different***

Respondent from the Edmonton Insight Community June 2020

Centennial Plaza Redevelopment

- + Overall design that encourages pedestrian flow and movement throughout the plaza
- + A series of mounds, including a sodded hill, areas of planting beds and a rubberized play surface
- + Childfriendly public art pieces where children can play
- + A location for a secured daycare play space
- + Structures and landscaping to provide shade during the day and lighting at night
- + Seating options for a variety of gatherings
- + Stronger pedestrian connection over Judy Padua Way to the Clock Tower Plaza
- + Added trees and landscaping to increase the natural environment

***I like the way you can flow
through the space.***

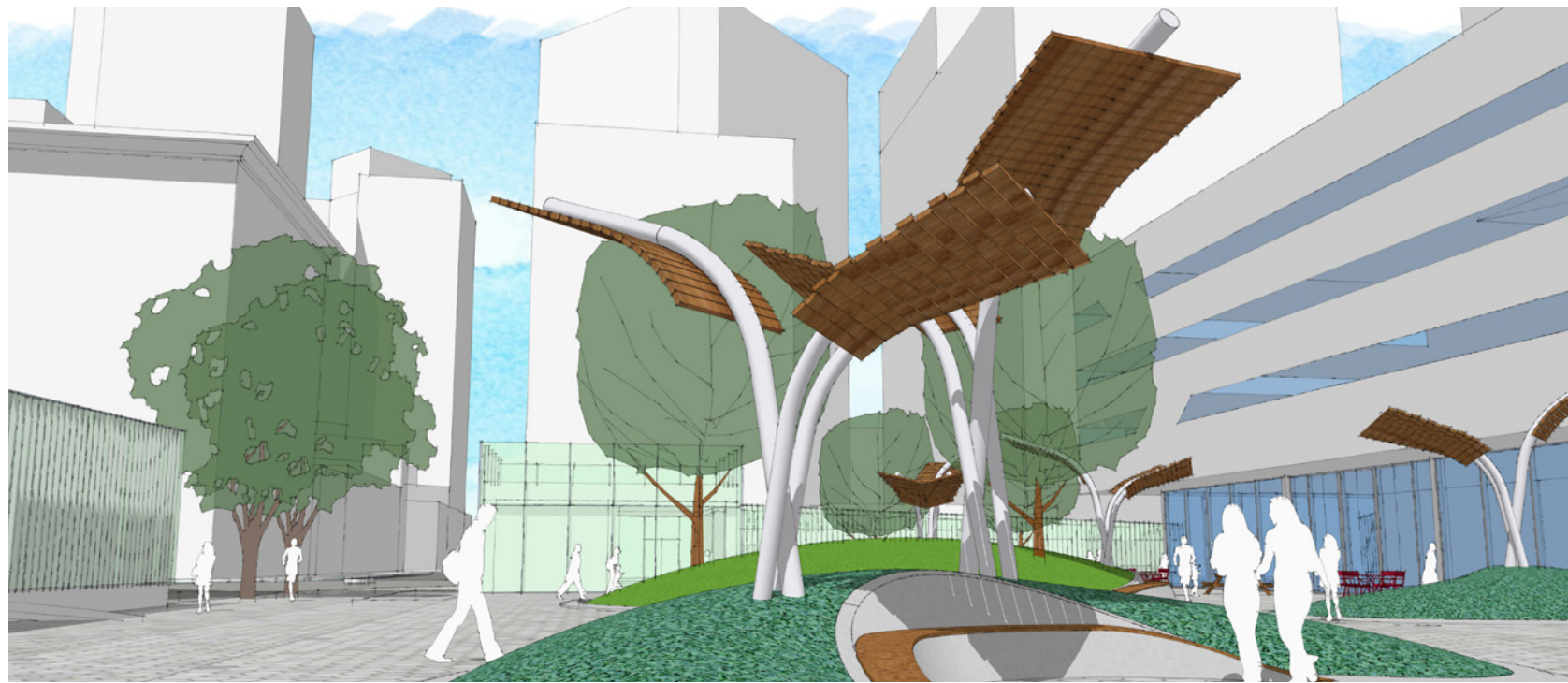
Respondent from the public June 2020

Layout for Centennial Plaza



ADVISE

Seating



View NW from 99 street



View SE from 110 street

Centennial Plaza Redevelopment Project October 2020

What we heard:

Respondents liked:

- + The built-in seating
- + Gathering mound or constructed landscaped hill
- + Seating that appeared to “grow” out of the wood decking
- + Wooden seating/park benches/tables

Respondents asked for:

- + An adequate amount and variety of different seating areas/spaces

It appears that all options have both bench style and table seating, which is all that I think matters...

Respondent from the Edmonton Insight Community, June 2020

What we did in the updated design:

- + Ensured a variety of seating and social options
- + Added locations for tables and bench style seating
- + Included interesting seating options built into the constructed landscaped hills and along the landscaped areas
- + Added sheltered seating

ADVISE

SHARE YOUR VOICE
SHAPE OUR CITY

Edmonton

Shade structures/canopies



View looking southwest from 99 street to 100 street



Night view looking west from 99 street to 100 street

What we heard:

Respondents liked:

- + The amount of trees and the natural shade
- + The colours/colour arrangement/colour design

Respondents asked for:

- + A mix of trees and shade structures/canopies

Need a mix of seating, shade, and landscape design to make the Plaza an inviting and versatile city space.

Respondent from the Edmonton Insight Community, June 2020

What we did in the updated design:

- + Ensured there was a mix of canopies and trees throughout the site to provide shade opportunities
- + Increased the number of canopies
- + Added light to the canopies which will illuminate the Plaza at night and in the winter
- + Changed the canopies to a wood material to bring a warm texture to the space

ADVISE

SHARE YOUR VOICE
SHAPE OUR CITY

Edmonton

Planting



I just want there to be a green space with lots of trees and maybe even some grass to escape the downtown ‘concrete jungle’.

Respondent from the public, June 2020

There can never be too many plants in an urban setting. So any design with plants is nice.

Respondent from the Edmonton Insight Community

Centennial Plaza Redevelopment Project October 2020



What we heard:

Respondents liked:

- + The green spaces
- + The mix of trees, plants and landscaped areas

What we did in the updated design:

- + Added additional green space
- + Increased seasonal planting and trees in the Plaza

ADVISE

SHARE YOUR VOICE
SHAPE OUR CITY

Edmonton

Surfacing



View looking west from 99 street

What we heard:

Respondents liked:

- + A durable/long lasting surface that appears to be easier to clean and maintain
- + A surface that will be safe from slipping when wet or icy.
- + Surface that is visually appealing with curves/shapes/patterns
- + A variety of options if possible

What we did in the updated design:

- + A continuous concrete paving pattern that is graphic and playful
- + Rubber play surface in children's play area for added color and safety
- + "Green" constructed hills for seating/walking

ADVISE

Centennial Plaza Redevelopment



Preliminary design site plan

SHARE YOUR VOICE
SHAPE OUR CITY



ADVISE

Centennial Plaza Redevelopment

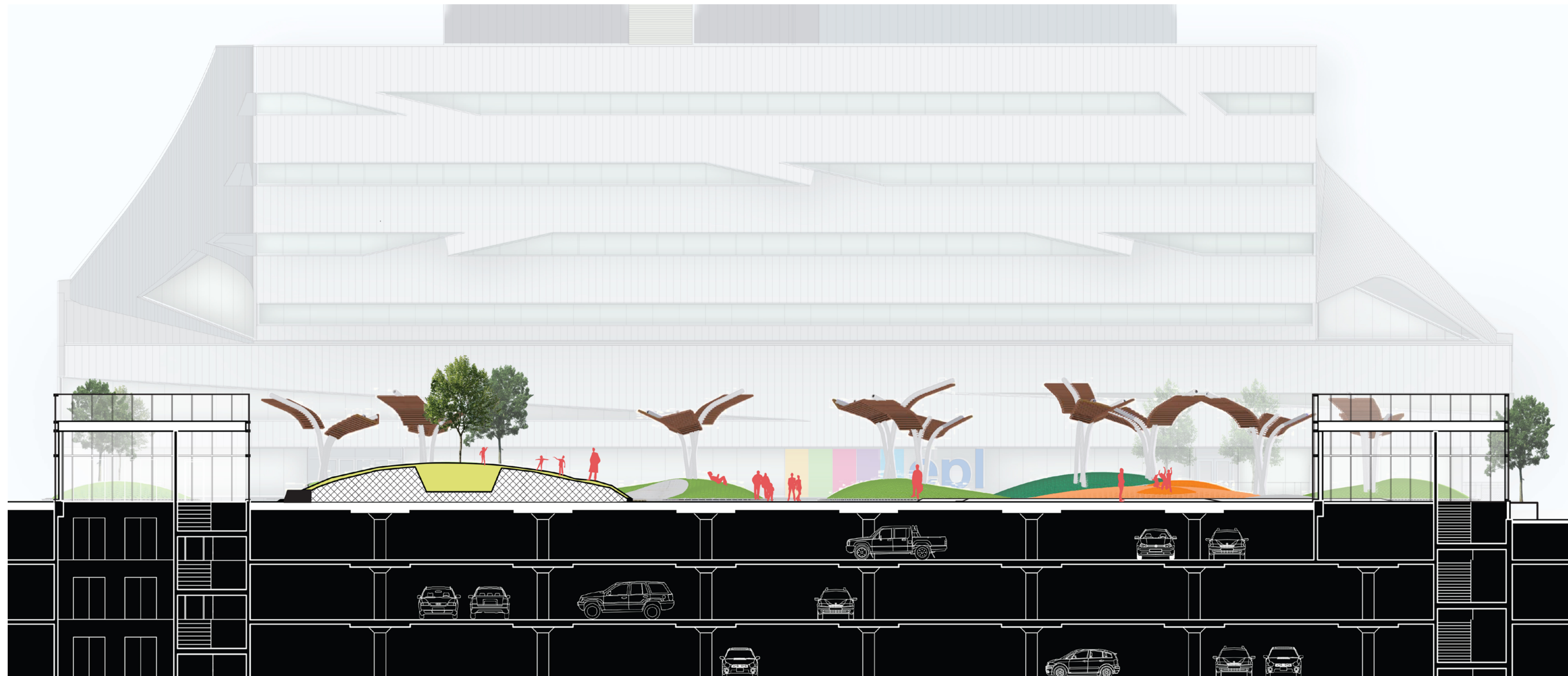


Image – view looking north from Judy Padua Way

SHARE YOUR VOICE
SHAPE OUR CITY

Centennial Plaza Redevelopment



Winter image – view looking southeast from 100 street

Centennial Plaza Redevelopment Project October 2020

SHARE YOUR VOICE
SHAPE OUR CITY

Edmonton

ADVISE

What happens next

Fall 2020 – What we heard report

Winter 2021 – Design continues

Spring 2021 – City Council to approve funding

Fall 2021 – Construction Tender

Thank you for your interest in this project.

Centennial Plaza Redevelopment Project October 2020

ADVISE

SHARE YOUR VOICE
SHAPE OUR CITY

Edmonton