

# Share your feedback on Mill Creek Trail Realignment

Learn more at [engaged.edmonton.ca/MillCreekTrail](https://engaged.edmonton.ca/MillCreekTrail)

**SHARE** YOUR VOICE  
**SHAPE** OUR CITY

**Edmonton**

ADVISE

## Project Area

### Mill Creek Ravine

- Mill Creek Ravine is a tributary ravine system of the North Saskatchewan River.
- The ravine is a popular park with numerous outdoor amenities for the public, including an off-leash area, picnic spots and an outdoor swimming pool.
- Mill Creek Ravine is also home to an active trail system. The section of trail in this project is located approximately 80 metres south of 76 Ave and west of 89 street.

# Project Background

## History

- In the Project area, there are two trails - a paved shared-use path located higher up in the ravine and a gravel trail below it.
- Shifting and unstable ground is common in this area and as a result, in 2014, the lower gravel trail failed and was closed to the public.
- A temporary retaining wall was installed to support the lower trail and re-open the trail for public use.
- In spring 2020, due to heavy rainfall, the retaining wall supporting the lower trail began to fail.
- The lower trail has been closed to the public since summer 2020 due to safety concerns.

# Project Background

## Trail Closure



*Failed lower gravel trail*



*Trail closure due to unsafe conditions*

## Project Purpose

- The purpose of the project is to realign the gravel trail as appropriate, with minimal impacts to the environment, in a cost effective and timely manner

# Project Purpose

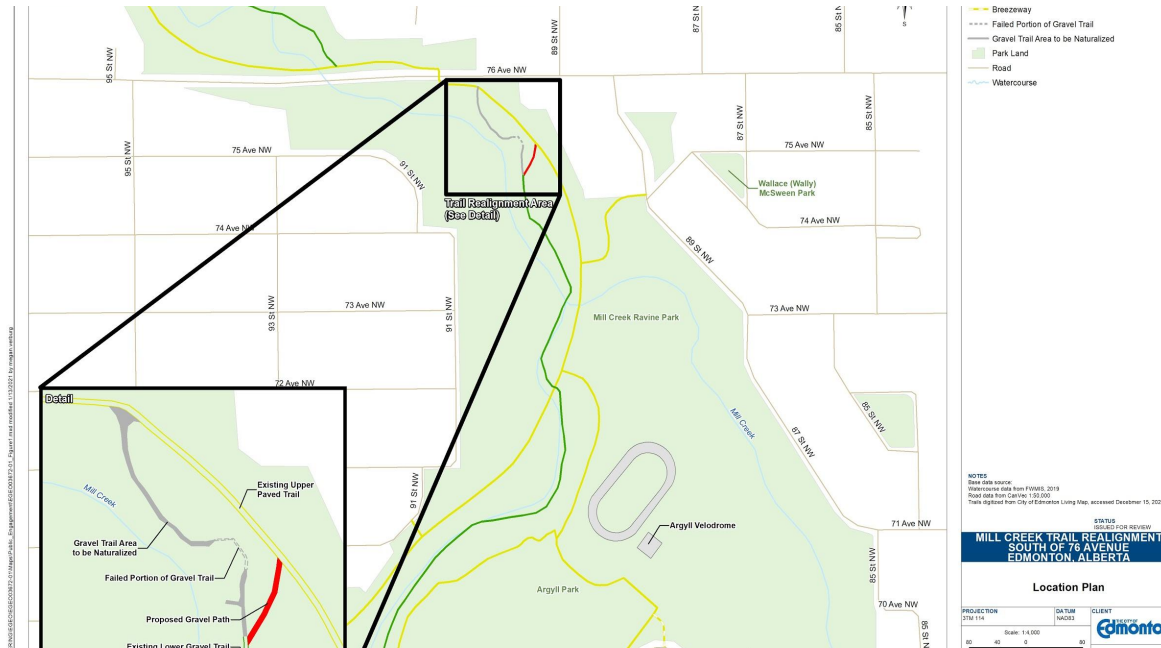
## Scope

- The lower gravel trail needs to be built on stable ground and still connect to the existing ravine trail system.
- Additional factors considered in determining the new trail location include:
  - Environmental factors
  - Technical considerations
  - Cost
  - Lifespan / lifecycle
  - Constructability / feasibility
  - Social constraints
  - Maintenance & operational considerations

# Project Purpose

## Proposed Trail Location

- The proposed trail realignment will provide the public a safe connection to the existing upper paved multi-use trail.



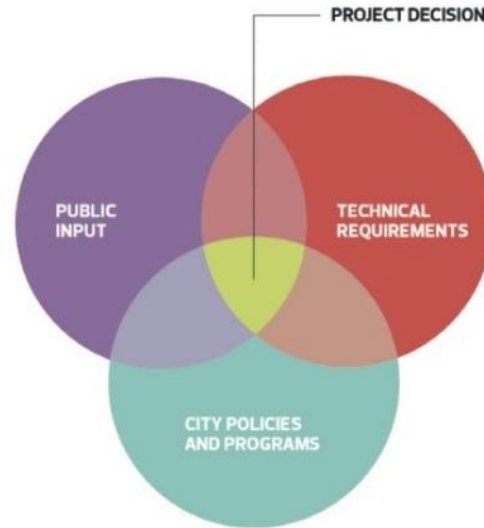
Edmonton



# Project Decision-Making

## City Policies and Programs

- Breathe: Green Network Strategy
- Live Active Strategy
- Parkland Bylaw
- Corporate Tree Management Policy
- River Access Guiding Principles Policy
- Age-Friendly Access Design Guide
- Winter City Guidelines
- Design and Construction Standards Volumes 1 - 9
- North Saskatchewan River Valley Area Redevelopment Plan
- Erosion and Sedimentation Control Guidelines





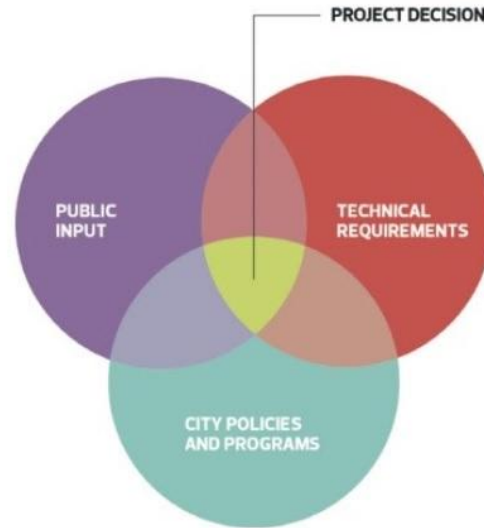
# Project Decision-Making

## Technical Requirements

- Bank and ground stability
- Environmental conditions
- Performance, reliability and safety
- Erosion control
- Water Course and rainfall data
- Operations and maintenance

## Public Input

- The unstable ground limits the possible locations for this new section of trail, but we still want to understand if we failed to consider anything important to trail users.



## Public Input

- Please visit [engaged.edmonton.ca/MillCreekTrail](https://engaged.edmonton.ca/MillCreekTrail) and let us know if you think we missed anything or, in choosing the new location, if we failed to account for any other important factors.
- Open for feedback from January 13 - January 27, 2021.

## Next Steps

- The City will review all public input received.
- As part of the trail reconstruction, the River Valley Bylaw 7188 requires an Environmental Impact Assessment (EIA) be performed prior to the project proceeding.
- The City will be presenting the EIA report to City Council in March 2021.
- Construction is targeted to begin in spring 2021 with the lower gravel trail reopening to the public in fall 2021.



**Thank you.**  
We appreciate your  
input.

Learn more at [Engaged.Edmonton.ca/MillCreekTrail](https://engaged.edmonton.ca/millcreektrail)

**SHARE** YOUR VOICE  
**SHAPE** OUR CITY

**Edmonton**